

For staining of nucleic acids on electrophoresis

ViewaBlue™ Stain KANTO



Kanto Reagents

ViewaBlue™ Stain KANTO can make the detection and recovery of nucleic acids much easier on electrophoresis!

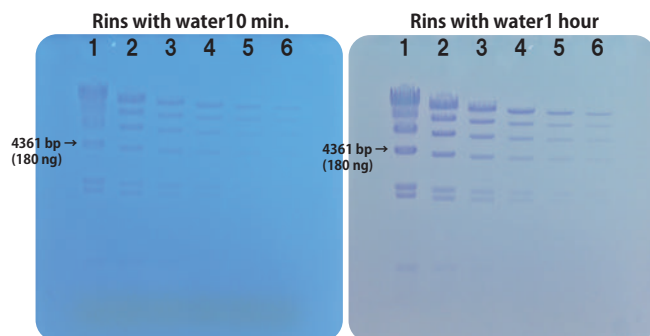
Features

- Nucleic acids after electrophoresis can be detected under visible light.
- You can select co-staining with electrophoresis or staining after electrophoresis.
- There is little damage to a nucleic acid.
- The mutagenesis of ViewaBlue™ is lower than ethidium bromide.
- The gel after the staining can do long-term preservation. (About 1 month)

Staining agarose gel

Staining after electrophoresis

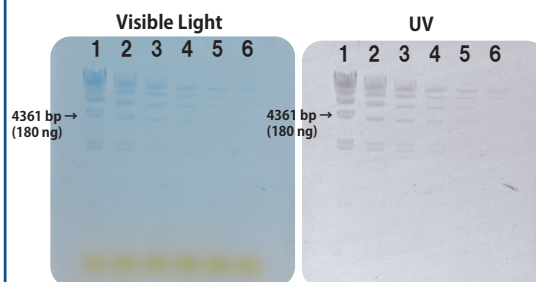
Conc.	Use the reagent without dilution.*
Method	Soak and gently shake gel for 5 minutes, and rinse it with water at least for 10 minutes.
Sensitivity	> 5 ng



Sample: λ -HindIII digest marker (diluted by twice in each lanes)
Carrier: Agarose KANTOLE

Co-staining with electrophoresis

Conc.	Dilute the reagent 100 times.
Method	Prepare agarose gel and running buffer as mentioned above, and run electrophoresis as usual.
Sensitivity	> 20 ng



Sample: λ -HindIII digest marker (diluted by twice in each lanes)

* If a minigel is stained by the ViewaBlue™ (without dilution/50 mL), it can use about 10 times.

Transformation of *E. coli*

EtBr (UV) **Product A (Blue Light)** **ViewaBlue™ (Visible Light)**

GFP **GFP** **GFP**

GFP genes were excised from the gels and purified.

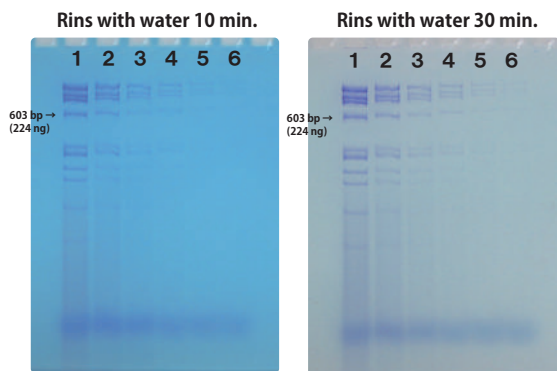
introduced into *E. coli* **detect GFP expression**

EtBr UV-15s **EtBr UV-30s**

Product A **ViewaBlue™**

Another application

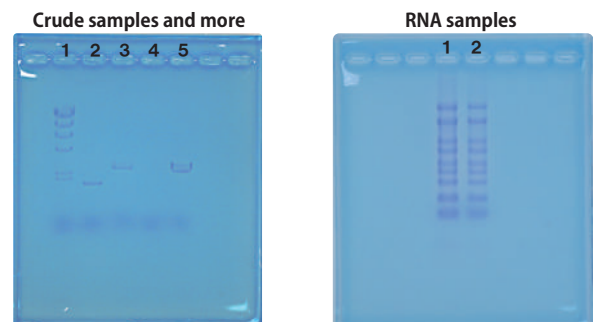
Poly-Acrylamide Gel Electrophoresis (PAGE)



Lane 1 ~ 6 : ϕ X174/*Hae* III digest marker diluted by twice in each lanes (Lane 1 : Total 2000 ng/Lane)
Carrier: 8 % Poly-Acrylamide Gel (Native-PAGE)
Buffer: 1 × TBE

※ **ViewaBlue™ cannot use to co-staining with PAGE.**

Crude samples and RNA samples



Lane 1 : λ -*Hind* III digest marker
Lane 2 : pUC18 plasmid (100 ng)
Lane 3 : pUC18 plasmid (100 ng) treated by restriction enzyme (PstI)
Lane 4 : Negative control
Lane 5 : Amplicon

Lane 1 : RNA Ladder (444 ng/band)
Lane 2 : RNA Ladder (222 ng/band)

Product Information

Product No.	Product Name	Grade	Package size
44045-08	ViewaBlue™ Stain KANTO	electrophoresis	500 mL



KANTO CHEMICAL CO., INC.
REAGENT DIVISION

East Muromachi Mitsui BLDG, 2-1, Nihonbashi Muromachi 2-chome,
Chuo-ku, Tokyo, 103-0022, JAPAN

Telephone +81-3-6214-1092

Telefax +81-3-3241-1053

<http://www.kanto.co.jp>

E-mail: kanto-61@gms.kanto.co.jp